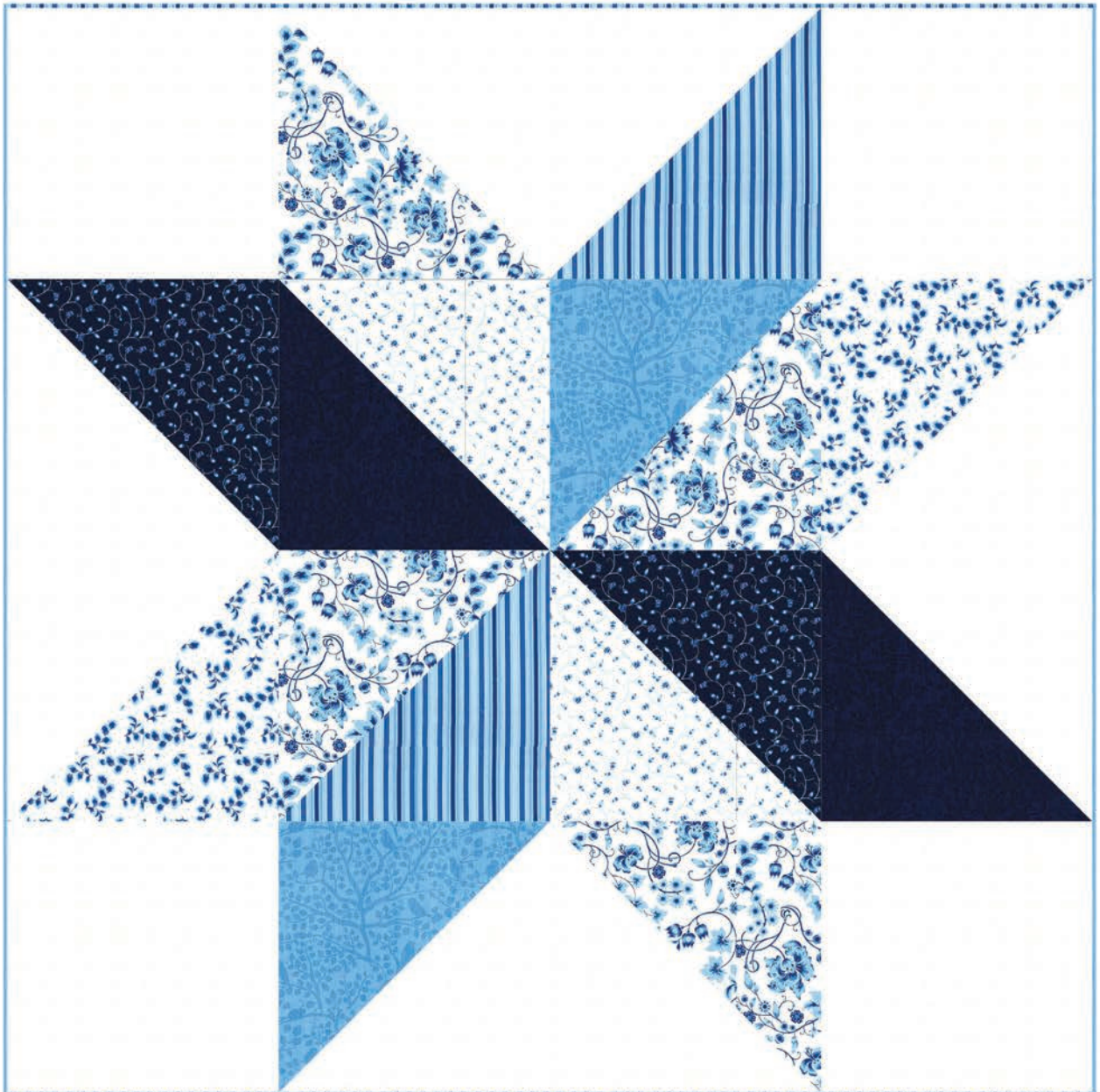




Large and in charge. Big pieces make the fabric the star of the show. Quilt design by Stephanie Prescott of A Quilter's Dream, featuring Sweet Tea designed by KariAnne Wood of Thistlewood Farms.

**BEGINNER | 1 DAY CLASS**



Delft Colorway

Finished Quilt: 64" x 64"

Free pattern available at [www.hoffmanfabrics.com](http://www.hoffmanfabrics.com)

# Sweet Tea Star

Quilt design by Stephanie Prescott of A Quilter's Dream, featuring Sweet Tea designed by KariAnne Wood of Thistlewood Farms.

64" x 64"

## Yardage Chart

<b>FABRIC</b>	<b>1 KIT</b>
P4276 243-Delft	1/2 yard
P4277 17-Cobalt	1 FQ
P4277 243-Delft	1 FQ
P4278 16-Sky	1 FQ
P4278 18-Royal	1 FQ
P4279 243-Delft	1 FQ
P4280 243-Delft	1 FQ + 1/2 yard binding
100 618-Zinc	2 yards

## Delft Colorway



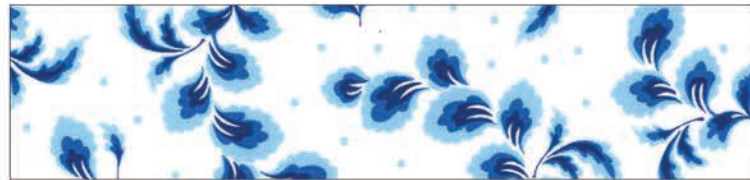
P4276 243-Delft



P4278 18-Royal



P4277 17-Cobalt



P4279 243-Delft



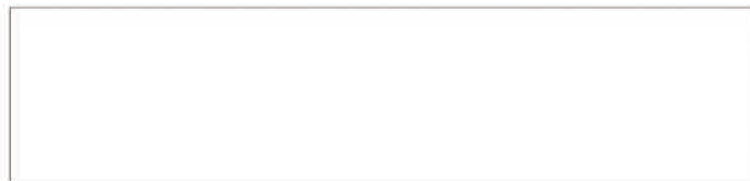
P4277 243-Delft



P4280 243-Delft



P4278 16-Sky



100 618-Zinc

View swatches and download quilt pattern at [www.hoffmanfabrics.com](http://www.hoffmanfabrics.com)

# Barn Star

## 64 x 64

### Fabric Requirements:

1 fat quarter each of (6) fabrics  
1/2 yard of favorite fabric  
2 yards background

Label the fat quarters 1-6 and the half yard 7. When assigning these numbers, keep relative values consistent within the following pairs.

1 & 7 - 2 & 4 - 3 & 6 - 5 & 7

### Cutting Instructions:

Cut all fat quarters into 16 7/8 inch squares.

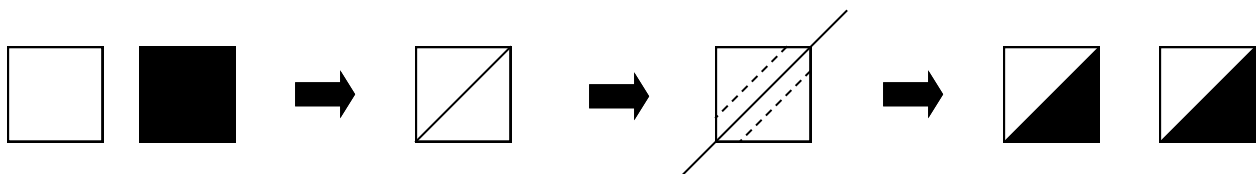
Cut the 1/2 yard into (2) 16 7/8 inch squares.

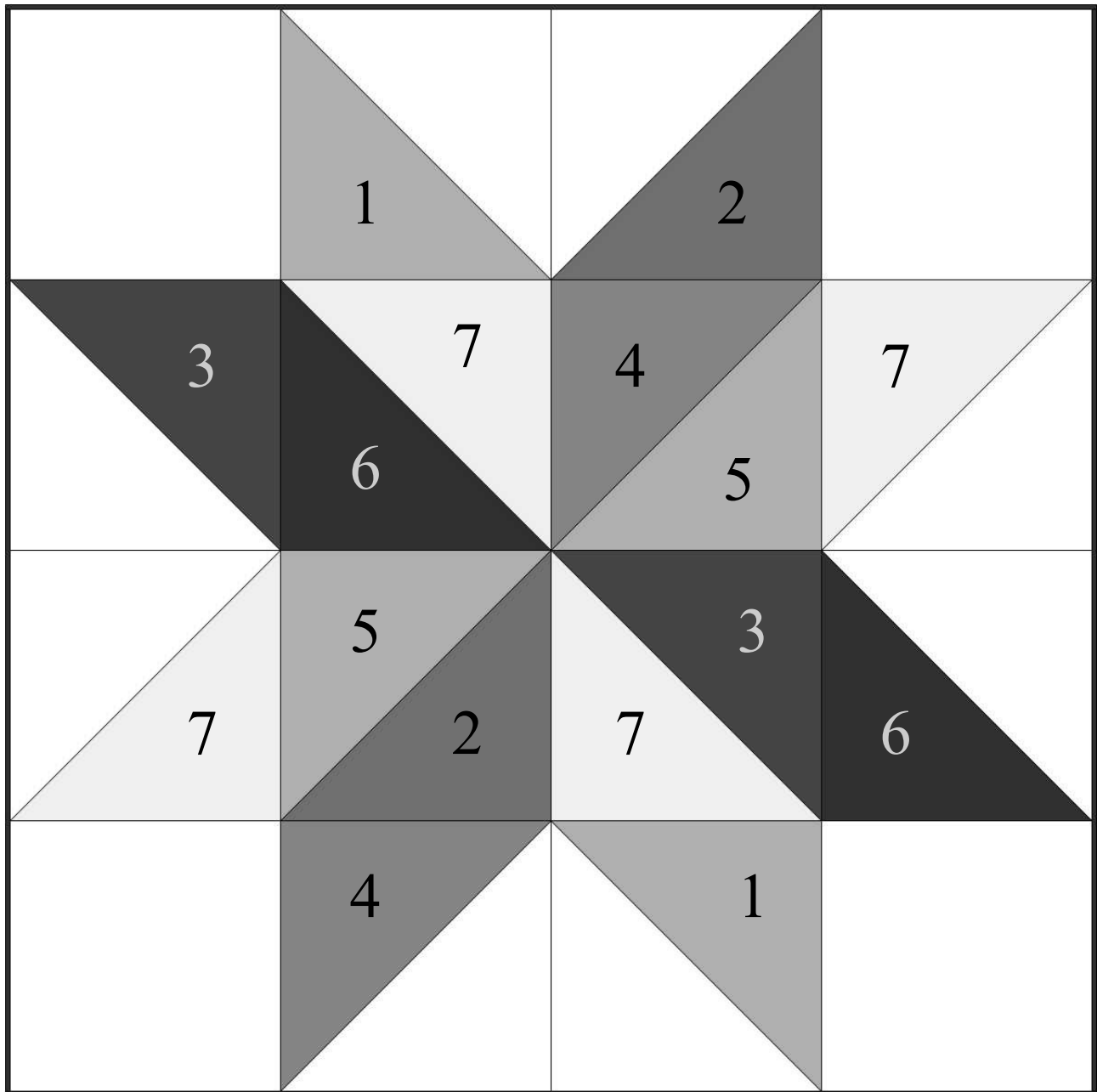
Cut the background fabric into:

- (2) 16 7/8 strips and sub cut into (4) 16 7/8 squares AND
- (2) 16 1/2 inch strips and sub cut into (4) 16 1/2 squares

### Block Construction:

1. Take (1) 16 7/8 square from **fabric #1** and (1) 16 7/8 squares from **background** fabric. Place one square of each fabric right sides together and draw a diagonal line on the wrong side of one of the squares. Pin. Stitch a scant 1/4 inch away from both sides of the drawn line. Cut apart on the drawn line and you have 2 sewn half square triangle units! See diagram below.
2. Take (1) 16 7/8 square from **fabric #7** and (1) 16 7/8 squares from **background** fabric. Place one square of each fabric right sides together and draw a diagonal line on the wrong side of one of the squares. Pin. Stitch a scant 1/4 inch away from both sides of the drawn line. Cut apart on the drawn line and you have 2 sewn half square triangle units! See diagram below.





3. Keeping the fabrics labeled, cut all remaining  $16 \frac{7}{8}$  inch squares in half diagonally (making triangles).

4. Take (1) triangle from **fabric #2** and (1) triangle from the **background** fabric. Place one triangle of each fabric right sides together. Pin. Stitch together using a  $\frac{1}{4}$  inch seam along the diagonal edge. You have 1 sewn half square triangle unit!

5. Repeat step #4 with remaining triangles in the following combinations:

2 & 5 - 3 & 7 - 4 & 5 - 6 & 7 - 3 & background -  
 4 & background - 6 & background

6. Take all sewn half square triangle units and the (4) 16 1/2 squares of the background fabric. Layout all units as indicated in the diagram on previous page. Sew together in rows.

Quilt and bind as desired. What a beautiful throw!

Binding—1/2 yard

Backing—4 yards

Designed by Stephanie Prescott  
for  
Hoffman of California Fabrics